

CANDIDATE
NAME

--

CENTRE
NUMBER

--	--	--	--	--

CANDIDATE
NUMBER

--	--	--	--

BIOLOGY

9700/53

Paper 5 Planning, Analysis and Evaluation

October/November 2016

1 hour 15 minutes

Candidates answer on the Question Paper.

No Additional Materials are required.

READ THESE INSTRUCTIONS FIRST

Write your Centre number, candidate number and name on all the work you hand in.

Write in dark blue or black pen.

You may use an HB pencil for any diagrams or graphs.

Do not use staples, paper clips, glue or correction fluid.

DO **NOT** WRITE IN ANY BARCODES.

Answer **all** questions.

Electronic calculators may be used.

You may lose marks if you do not show your working or if you do not use appropriate units.

At the end of the examination, fasten all your work securely together.

The number of marks is given in brackets [] at the end of each question or part question.

This document consists of **9** printed pages and **3** blank pages.

- 1 (a) The opening and closing of stomata involves the movement of potassium ions into and out of guard cells in response to environmental factors, for example light and water stress.

This movement of potassium ions is influenced by the concentration of calcium ions in the cytoplasm of guard cells. When plants are water stressed, abscisic acid (ABA) release causes the concentration of calcium ions in the cytoplasm to increase. The increase in calcium ions causes a series of changes resulting in the loss of potassium ions, so the stomata close in light.

A student investigated the effect of calcium chloride in overcoming the effect of light on stomata.

The student was provided with:

- 500 cm³ of 1.0 mmol dm⁻³ buffered calcium chloride (CaCl₂) solution
- freshly picked leaves from a plant that had been kept in light for 2 hours so that all the stomata were open.

The student soaked three epidermal strips of leaves in each of a range of calcium chloride solutions for 3 hours and recorded the number of closed stomata. An epidermal strip is made by peeling the epidermis from a leaf as a single layer.

- (i) Identify the independent and dependent variables in this investigation.

independent variable

.....

dependent variable

.....[2]

- (ii) The student used the 1.0 mmol dm⁻³ CaCl₂ solution provided to prepare 50 cm³ of four other concentrations by reducing the concentration by half each time.

State the method that the student used to make these four concentrations.

.....

.....

.....[1]

- (b) (i) Suggest a hypothesis that the student could test about the effect of CaCl₂ on the opening and closing of stomata.

.....

.....

.....[1]

(c) The student also tested the hypothesis:

The stomata on the upper epidermis of a leaf and the stomata on the lower epidermis respond differently to ABA.

- Young leaves that had just expanded were removed from seedling plants and cut into strips 5 mm wide and 10 mm long.
 - The upper and lower epidermis were removed from five leaf strips and put into the same concentration of buffered ABA solution.
 - This process was repeated for each different concentration of ABA solution.
 - These were left in a constant environment and supplied with carbon dioxide-free air for two hours.
 - The diameter of each stomatal aperture was measured using an eyepiece graticule.
 - The eyepiece graticule was calibrated using a stage micrometer at $\times 400$ and the stomata measured at the same magnification using the same microscope.
 - 10 randomly selected stomata on each of 5 epidermal strips from the lower and upper epidermis were measured at each ABA concentration.
- (i) State two ways in which the method of measuring the diameter of the stomata has been standardised.

1.
2.[1]

Fig. 1.1 shows stomata at different stages of opening.

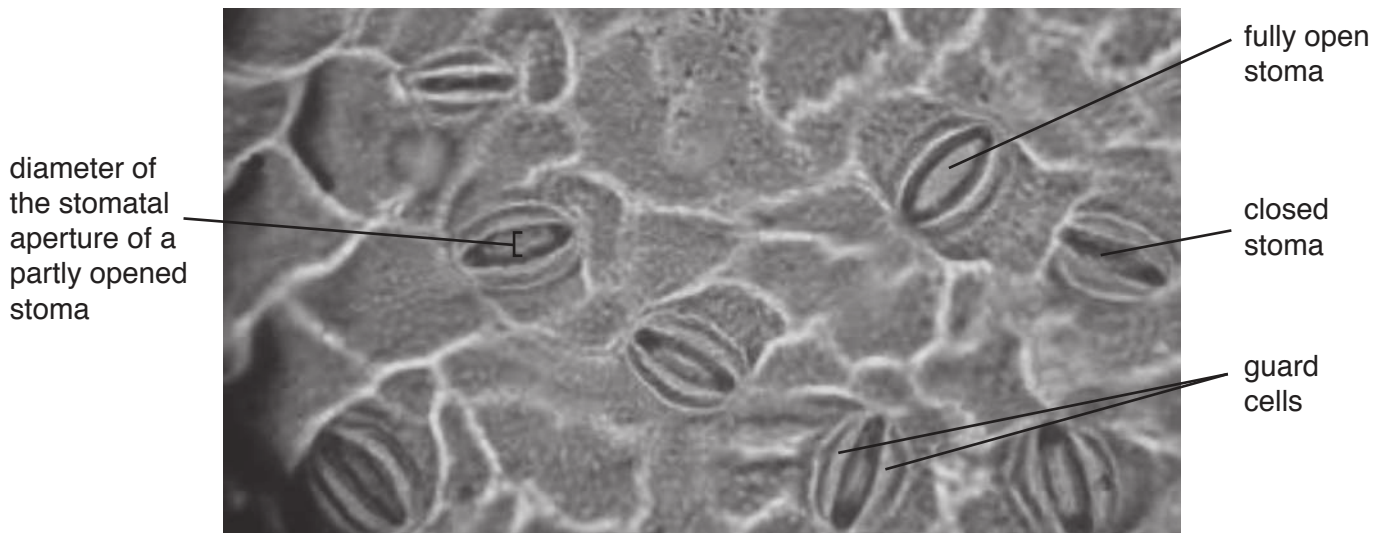


Fig. 1.1

(ii) Fig. 1.2 shows the eyepiece graticule and stage micrometer used by the student.

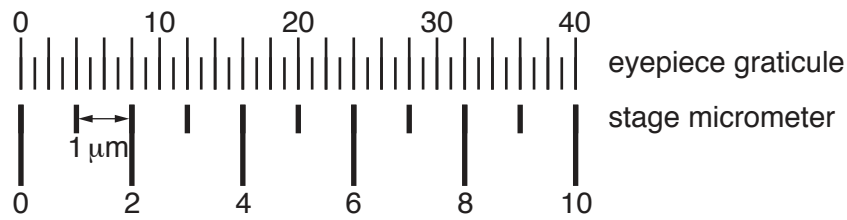


Fig. 1.2

The diameter of a stomatal aperture was 3 eyepiece units.

Calculate the actual size of the aperture.

..... μm [1]

(d) Fig. 1.3 shows the results of the experiment. The 95% confidence limits are shown for each mean stomatal aperture.

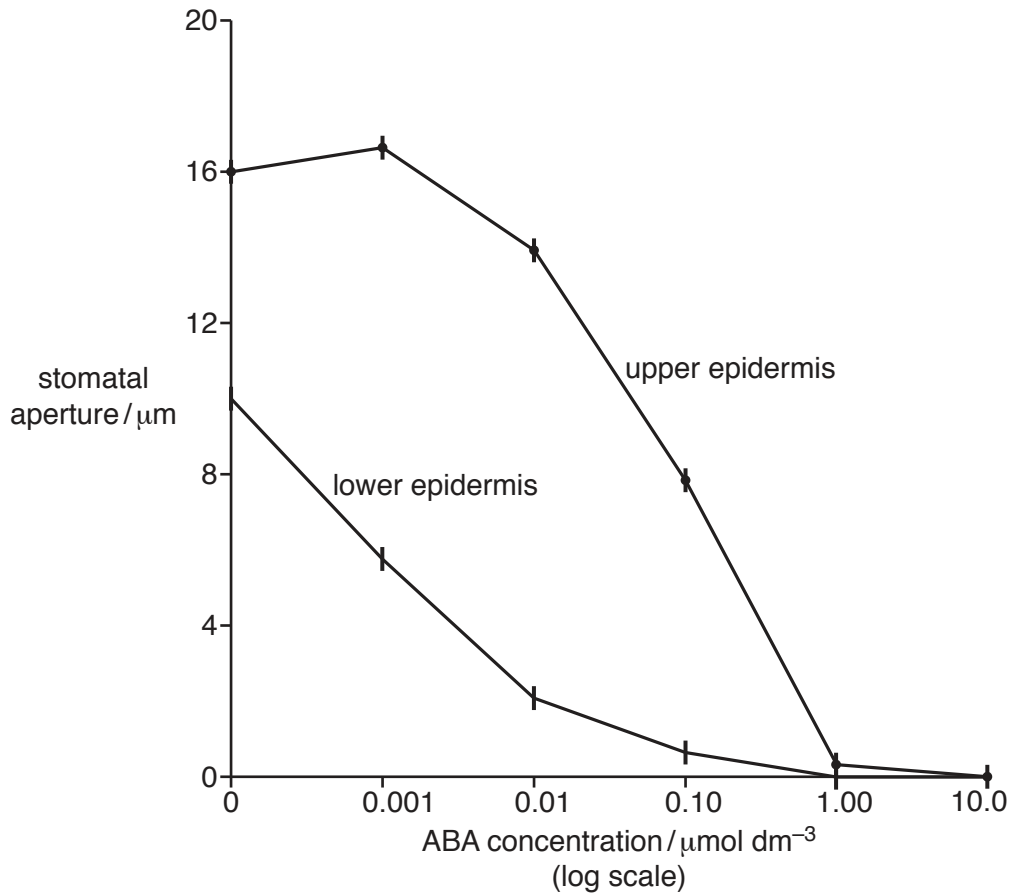


Fig. 1.3

(i) State **one** piece of evidence in Fig. 1.3 that supports the student's hypothesis that:

The stomata on the upper epidermis of a leaf and the stomata on the lower epidermis respond differently to ABA.

.....

- (iii) Suggest a null hypothesis that could be used in a statistical test to compare the yield of barley with the control.

.....
[1]

- (b) In a second investigation the biodiversity in two fields of barley was studied.

Barley was planted at the same density in each field and left to grow until it reached maturity.

In one of the fields pesticides (herbicides and insecticides) were used to manage pests. In the other field pesticides were not used.

When the barley was mature, a standard sampling method was used to estimate the number of each different type of organism found in each field. These numbers were used to calculate the species diversity of each field using the formula for Simpson's Index of Diversity (D).

$$D = 1 - \left(\sum \left(\frac{n}{N} \right)^2 \right)$$

n = number of individuals of each type present in the sample
 N = the total number of all individuals of all types
 Σ = the sum of

Table 2.1 shows the results of this investigation and some of the calculations for Simpson's Index of Diversity.

Table 2.1

type of organism	mean number of individuals in 10 m ² samples from fields using pesticides	$\left(\frac{n}{N} \right)^2$	mean number of individuals in 10 m ² samples from fields without pesticides	$\left(\frac{n}{N} \right)^2$
dicotyledons	3	0.004	60	0.021
monocotyledons	15	0.102	120	0.084
ground beetles	20		45	
butterflies and moths	4	0.007	35	0.007
bees	0	0.000	95	0.053
small mammals	3	0.004	23	0.003
birds	2	0.002	36	0.008
total	47		414	

(i) Complete Table 2.1 **and** use the data to calculate D for both fields of barley.

In fields using pesticides $D =$

In fields without pesticides $D =$ [3]

(ii) State what the results of this investigation show about the effect of pesticides on the plants and animals studied.

.....
.....
.....
.....
..... [2]

[Total:11]

BLANK PAGE

Permission to reproduce items where third-party owned material protected by copyright is included has been sought and cleared where possible. Every reasonable effort has been made by the publisher (UCLES) to trace copyright holders, but if any items requiring clearance have unwittingly been included, the publisher will be pleased to make amends at the earliest possible opportunity.

To avoid the issue of disclosure of answer-related information to candidates, all copyright acknowledgements are reproduced online in the Cambridge International Examinations Copyright Acknowledgements Booklet. This is produced for each series of examinations and is freely available to download at www.cie.org.uk after the live examination series.

Cambridge International Examinations is part of the Cambridge Assessment Group. Cambridge Assessment is the brand name of University of Cambridge Local Examinations Syndicate (UCLES), which is itself a department of the University of Cambridge.